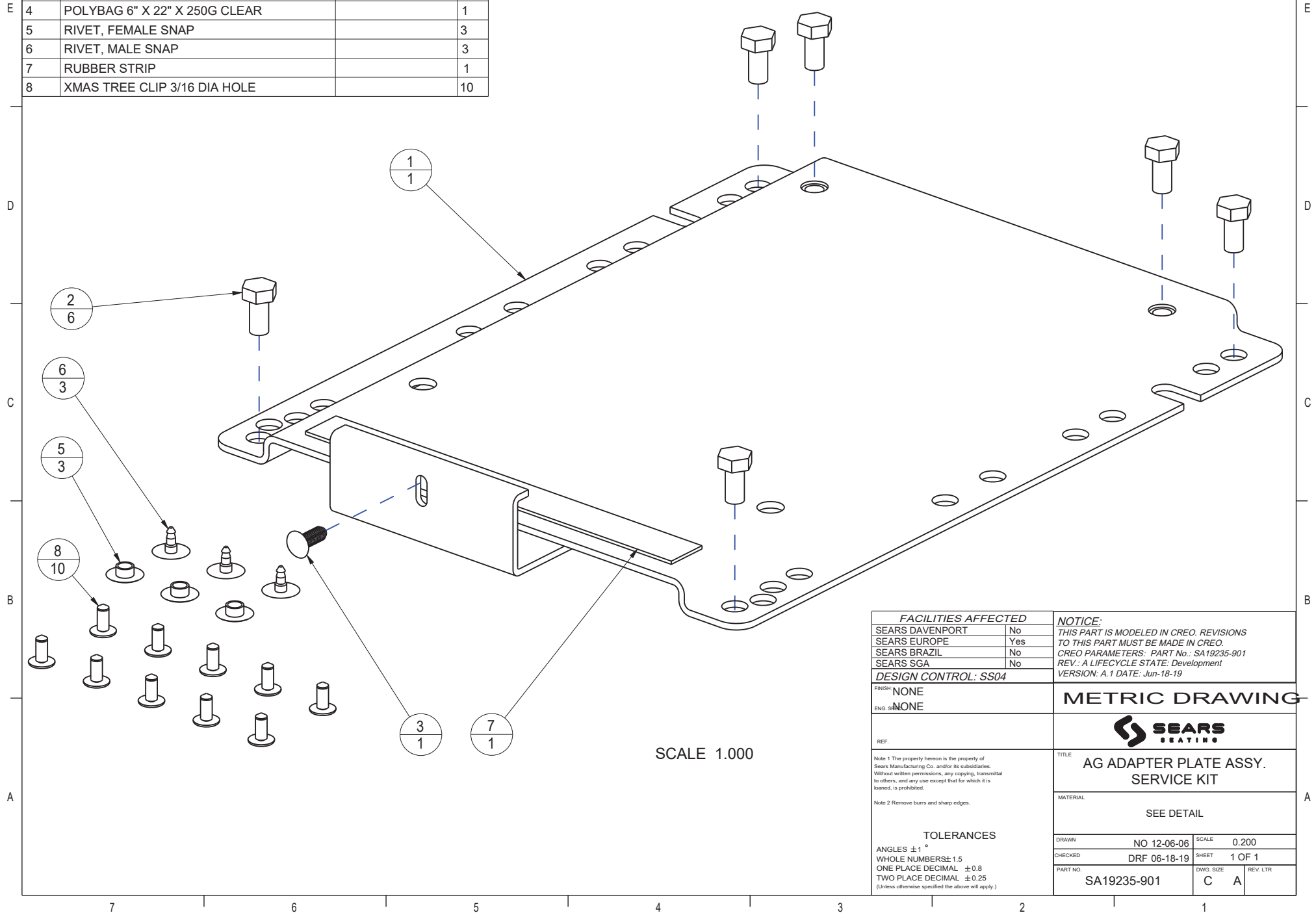


ITEM	DESCRIPTION	QTY
1	ADAPTER PLATE, AG	1
2	BOLT, HEX HD M8 x 1.25 x 16LG.	6
3	CHRISTMAS TREE CLIP	1
4	POLYBAG 6" X 22" X 250G CLEAR	1
5	RIVET, FEMALE SNAP	3
6	RIVET, MALE SNAP	3
7	RUBBER STRIP	1
8	XMAS TREE CLIP 3/16 DIA HOLE	10

REV. LET.	NOTIFICATION	DATE	BY	CHANGE
B	CN 00034892	06-18-19	NO	REVISED
33S0132 WAS 33S0132, ADDED 33S0139				



FACILITIES AFFECTED		NOTICE: THIS PART IS MODELED IN CREO. REVISIONS TO THIS PART MUST BE MADE IN CREO. CREO PARAMETERS: PART No.: SA19235-901 REV.: A LIFECYCLE STATE: Development VERSION: A.1 DATE: Jun-18-19
SEARS DAVENPORT	No	
SEARS EUROPE	Yes	
SEARS BRAZIL	No	
SEARS SGA	No	
DESIGN CONTROL: SS04		
FINISH:	NONE	METRIC DRAWING
ENG. SIZE:	NONE	
REF.		
<p>Note 1 The property hereon is the property of Sears Manufacturing Co. and/or its subsidiaries. Without written permissions, any copying, transmittal to others, and any use except that for which it is loaned, is prohibited.</p> <p>Note 2 Remove burrs and sharp edges.</p>		
TOLERANCES		TITLE
ANGLES $\pm 1^\circ$ WHOLE NUMBERS $\pm 1.5$ ONE PLACE DECIMAL $\pm 0.8$ TWO PLACE DECIMAL $\pm 0.25$ (Unless otherwise specified the above will apply.)		AG ADAPTER PLATE ASSY. SERVICE KIT
		MATERIAL
		SEE DETAIL
		DRAWN
		NO 12-06-06
		SCALE
		0.200
		CHECKED
		DRF 06-18-19
		SHEET
		1 OF 1
		PART NO.
		SA19235-901
		DWG. SIZE
		C A
		REV. LTR